



**Greg Leonard**

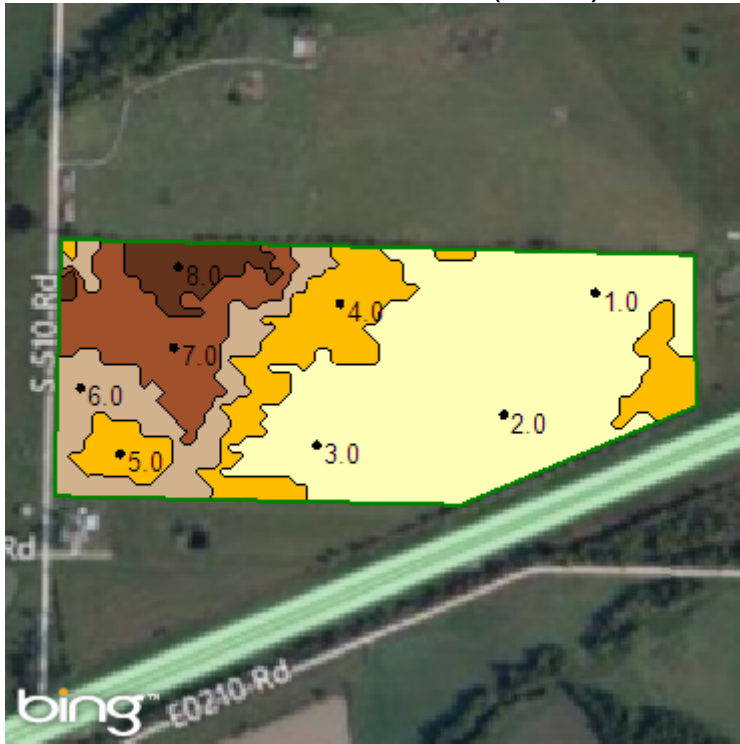
**Leonard Farms**

**Desma Johnson House**

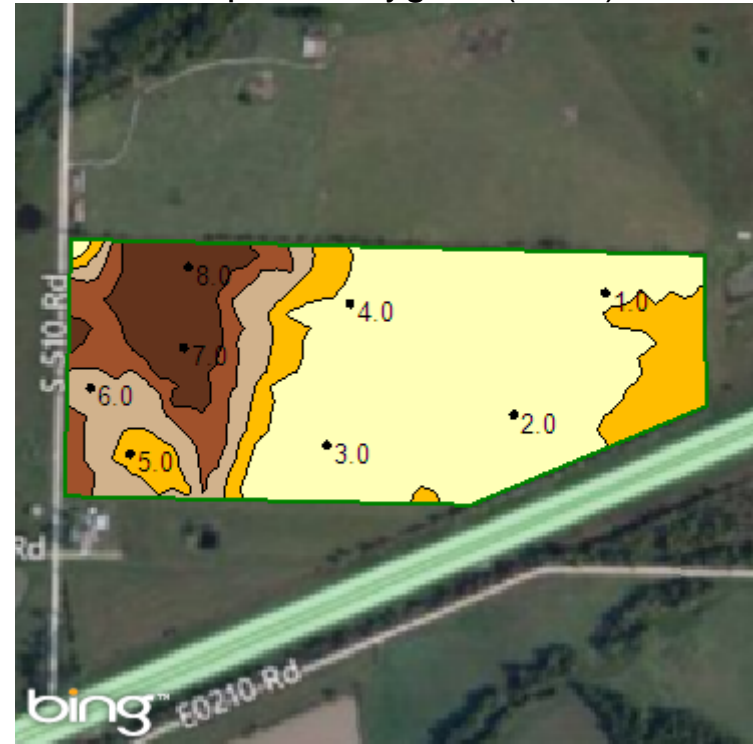
**Area: 58.78 ac**



Shallow EC Zones (2012)



Deep EC Polygons (2012)



Grower: Greg Leonard  
 Farm: Leonard Farms  
 Field: Desma Johnson House  
 Area: 58.78 ac

|                  |                       |
|------------------|-----------------------|
|                  | Field Boundary        |
| Shallow EC Zones |                       |
|                  | 1 (29.8 ac ) (50.7 %) |
|                  | 2 (11.1 ac ) (18.9 %) |
|                  | 3 (7.5 ac ) (12.8 %)  |
|                  | 4 (6.8 ac ) (11.5 %)  |
|                  | 5 (3.6 ac ) (6.0 %)   |

Season: 2012  
 Min: 16.65 mS/meter  
 Avg: 50.61 mS/meter  
 Max: 128.83 mS/meter

|                           |                                  |
|---------------------------|----------------------------------|
|                           | Field Boundary                   |
| Deep EC Polygons mS/meter |                                  |
|                           | 16.6 - 38.5 (32.1 ac ) (54.5 %)  |
|                           | 38.8 - 62.7 (8.3 ac ) (14.0 %)   |
|                           | 63 - 84.3 (6.8 ac ) (11.7 %)     |
|                           | 84.6 - 104.2 (5.6 ac ) (9.5 %)   |
|                           | 104.2 - 128.8 (6.0 ac ) (10.2 %) |



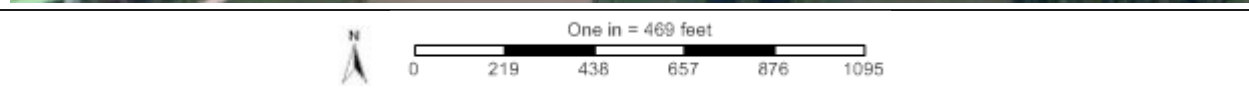
# CEC - Soil Test

Grower: Greg Leonard  
 Farm: Leonard Farms  
 Field: Desma Johnson House  
 Area: 58.78 ac

Season: 2012  
 Min: 5.08 meq/100 g  
 Avg: 6.90 meq/100 g  
 Max: 9.59 meq/100 g



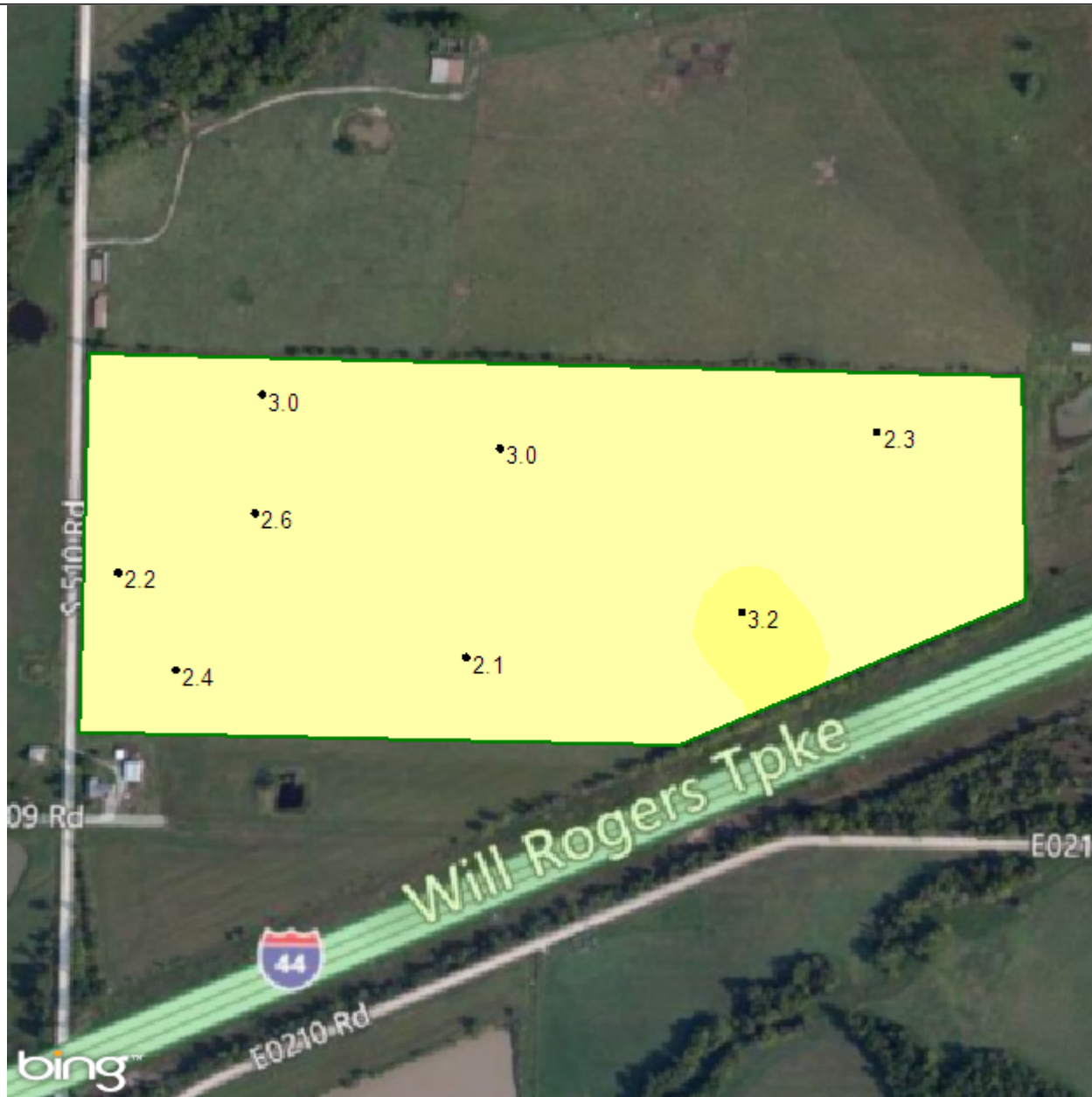
| Field Boundary            |                    |
|---------------------------|--------------------|
| CEC - Soil Test meq/100 g |                    |
| 5.1 - 6.5                 | (22.9 ac) (39.0 %) |
| 6.5 - 7.5                 | (23.3 ac) (39.7 %) |
| 7.5 - 8.4                 | (5.7 ac) (9.7 %)   |
| 8.4 - 8.9                 | (4.3 ac) (7.2 %)   |
| 8.9 - 9.6                 | (2.5 ac) (4.3 %)   |



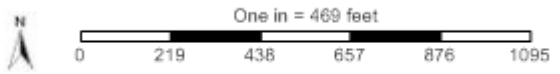
# OM - Soil Test

Grower: Greg Leonard  
 Farm: Leonard Farms  
 Field: Desma Johnson House  
 Area: 58.78 ac

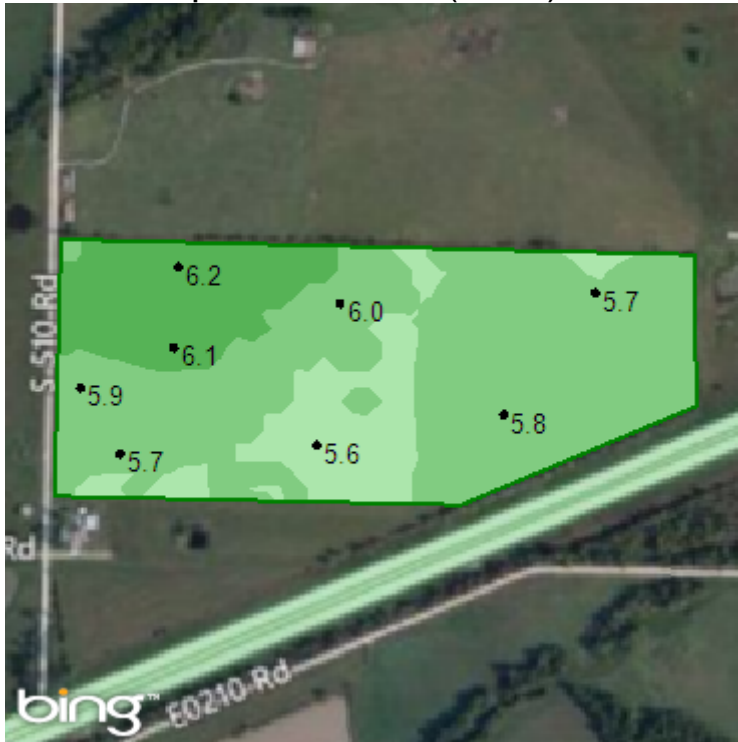
Season: 2012  
 Min: 2.11 Percent  
 Avg: 2.62 Percent  
 Max: 3.16 Percent



| Field Boundary         |                     |
|------------------------|---------------------|
| OM - Soil Test Percent |                     |
| < 2 Very Low           | (0.0 ac ) (0.0 %)   |
| 2 - 3 Low              | (56.3 ac ) (95.8 %) |
| 3 - 5 Medium           | (2.5 ac ) (4.2 %)   |
| 5 - 10 Optimum         | (0.0 ac ) (0.0 %)   |
| > 10 Very High         | (0.0 ac ) (0.0 %)   |



pH - Soil Test (2012)



Lime Recommendation (2012)



Grower: Greg Leonard  
 Farm: Leonard Farms  
 Field: Desma Johnson House  
 Area: 58.78 ac

Season: 2012  
 Min: 5.60 PH SCALE  
 Avg: 5.84 PH SCALE  
 Max: 6.20 PH SCALE

Season: 2012  
 Min Rate: 1,986.70 lb/ac  
 Avg Rate: 2,749.51 lb/ac  
 Max Rate: 3,140.38 lb/ac  
 Total Nutrient: 161,628.70 lb  
 Applied Area: 58.78 ac

Order Id: 214203  
 Order Task Id: 4967749  
 Lime Rec Option: SMP Buffer pH  
 pH Target: 6.5

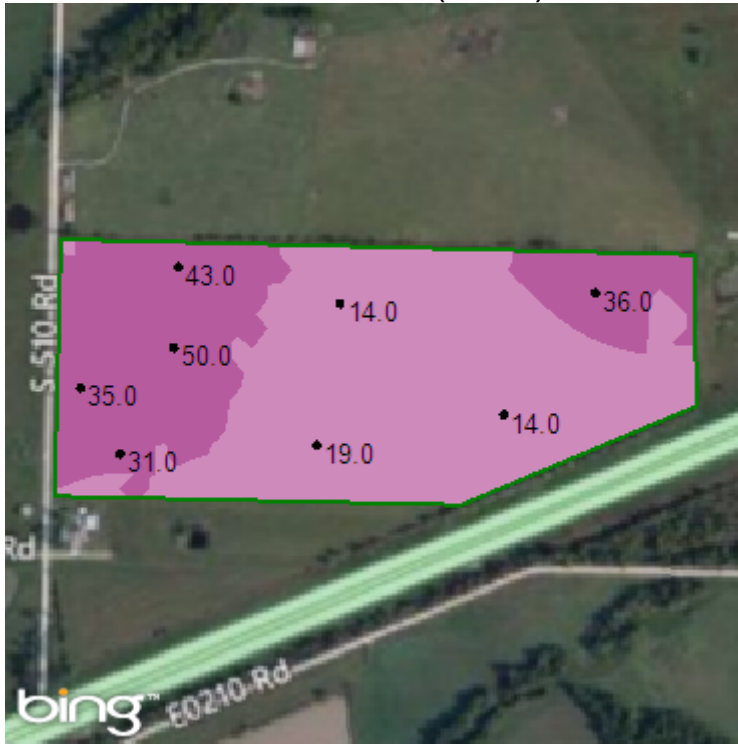
|                                |                                       |
|--------------------------------|---------------------------------------|
|                                | Field Boundary                        |
| <b>pH - Soil Test PH SCALE</b> |                                       |
|                                | < 5.3 Very Low (0.0 ac ) (0.0 %)      |
|                                | 5.3 - 5.7 Low (12.2 ac ) (20.7 %)     |
|                                | 5.7 - 6.0 Medium (36.1 ac ) (61.4 %)  |
|                                | 6.0 - 6.8 Optimum (10.5 ac ) (17.9 %) |
|                                | > 6.8 Very High (0.0 ac ) (0.0 %)     |

|                                  |                                     |
|----------------------------------|-------------------------------------|
|                                  | Field Boundary                      |
| <b>Lime Recommendation lb/ac</b> |                                     |
|                                  | 1986.7 - 2114.4 (3.5 ac ) (5.9 %)   |
|                                  | 2118.7 - 2344.7 (5.7 ac ) (9.8 %)   |
|                                  | 2350.4 - 2783.1 (16.2 ac ) (27.5 %) |
|                                  | 2795.3 - 3049 (17.0 ac ) (28.9 %)   |
|                                  | 3049 - 3140.4 (16.4 ac ) (27.9 %)   |

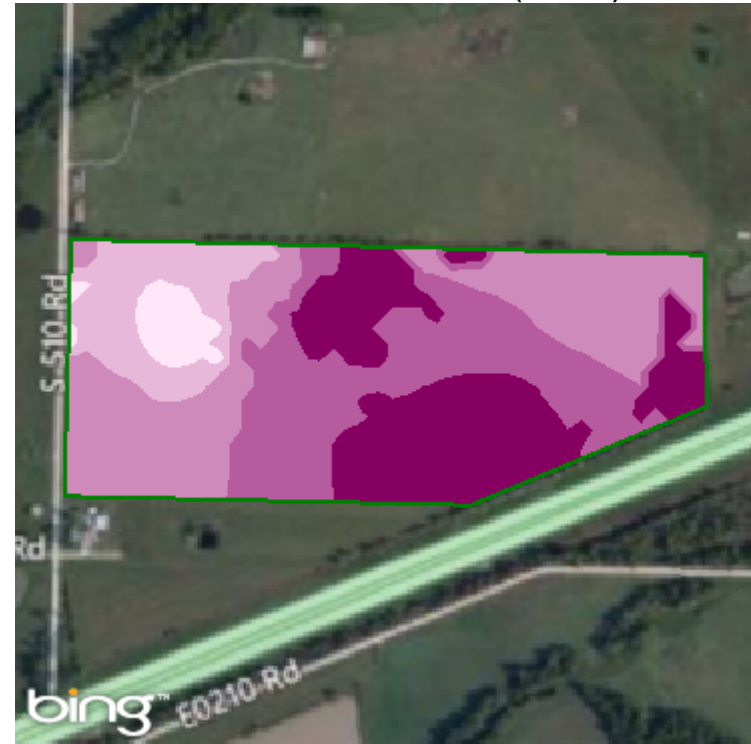


**This Page Intentionally Left Blank**

## P - Soil Test (2012)



## P Recommendation (2012)















Grower: Greg Leonard  
 Farm: Leonard Farms  
 Field: Desma Johnson House  
 Area: 58.78 ac

Season: 2012  
 Min: 14.00 ppm  
 Avg: 27.04 ppm  
 Max: 49.93 ppm

Season: 2012  
 Min Rate: 34.15 lb/ac  
 Avg Rate: 65.50 lb/ac  
 Max Rate: 86.58 lb/ac  
 Total Nutrient: 3,850.33 lb  
 Applied Area: 58.78 ac

Order Id: 214203  
 Order Task Id: 4967741  
 Crop - Year 1: Corn  
 Purpose - Year 1: Dry Grain  
 Yield Goal - Year 1: 125  
 P Rec Option: No Build

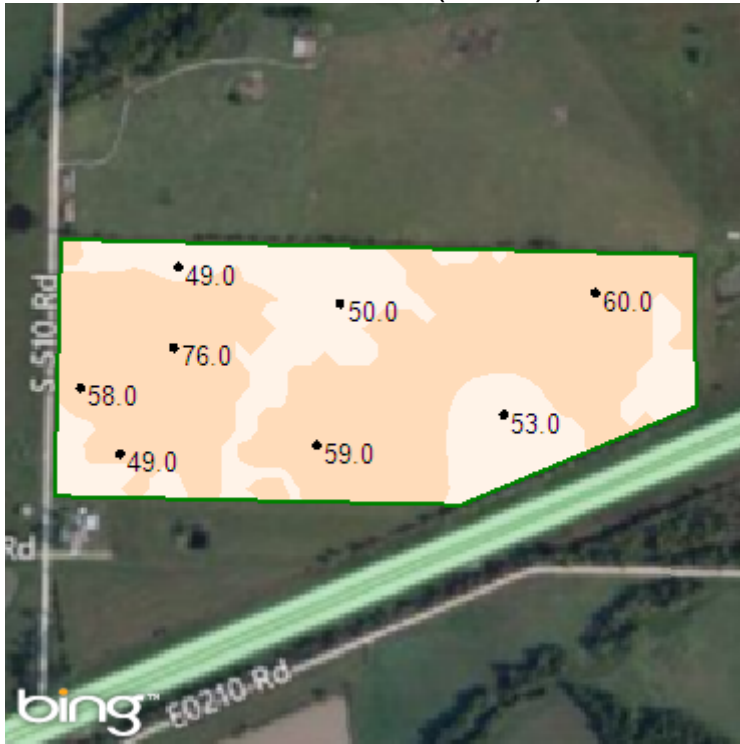
|   |                                     |
|---|-------------------------------------|
|    | Field Boundary                      |
|   | P - Soil Test ppm                   |
|   | < 3 Very Low (0.0 ac ) (0.0 %)      |
|  | 3 - 14 Low (0.0 ac ) (0.0 %)        |
|  | 14 - 30 Medium (37.0 ac ) (63.0 %)  |
|  | 30 - 50 Optimum (21.8 ac ) (37.0 %) |
|  | > 50 Very High (0.0 ac ) (0.0 %)    |

|   |                                 |
|---|---------------------------------|
|    | Field Boundary                  |
|   | P Recommendation lb/ac          |
|   | 34.1 - 43.4 (2.9 ac ) (4.9 %)   |
|  | 43.6 - 50.5 (6.2 ac ) (10.6 %)  |
|  | 50.8 - 63.4 (18.0 ac ) (30.6 %) |
|  | 63.6 - 76.6 (16.1 ac ) (27.3 %) |
|  | 76.7 - 86.6 (15.6 ac ) (26.5 %) |

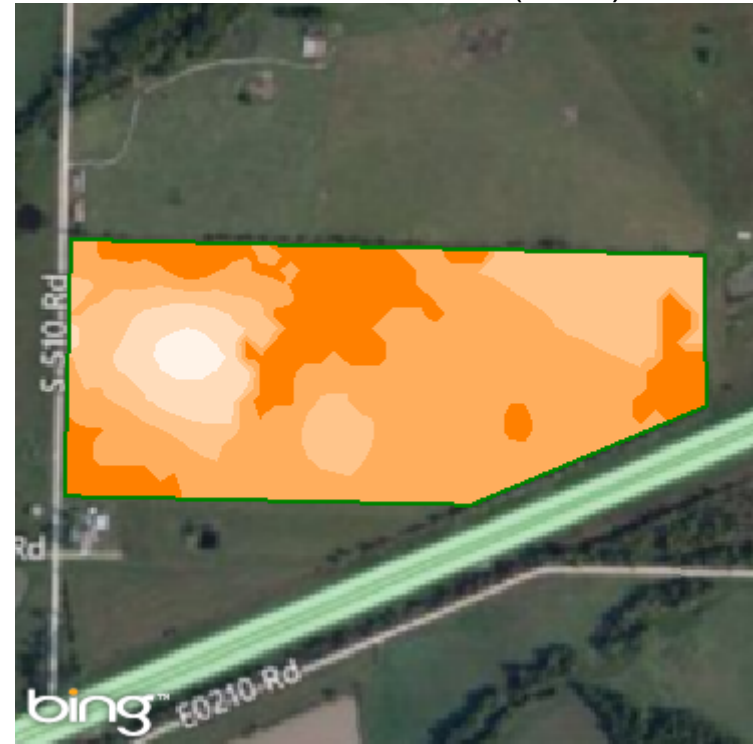




K - Soil Test (2012)



K Recommendation (2012)















Grower: Greg Leonard  
 Farm: Leonard Farms  
 Field: Desma Johnson House  
 Area: 58.78 ac

Season: 2012  
 Min: 49.04 ppm  
 Avg: 56.52 ppm  
 Max: 75.75 ppm

Season: 2012  
 Min Rate: 107.59 lb/ac  
 Avg Rate: 121.96 lb/ac  
 Max Rate: 127.71 lb/ac  
 Total Nutrient: 7,169.20 lb  
 Applied Area: 58.78 ac

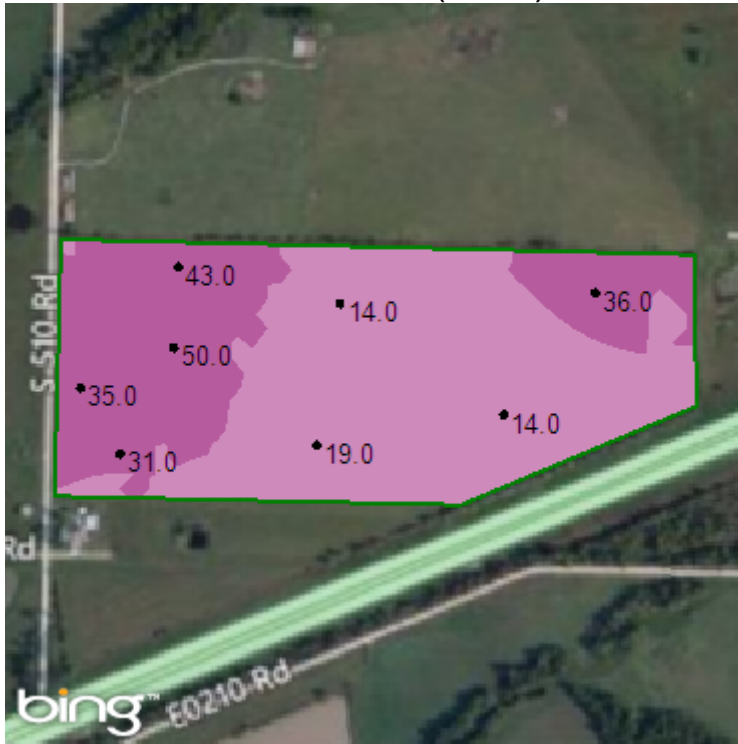
Order Id: 214203  
 Order Task Id: 4967742  
 Crop - Year 1: Corn  
 Purpose - Year 1: Dry Grain  
 Yield Goal - Year 1: 125  
 K Rec Option: No Build

|   |                                     |
|---|-------------------------------------|
|    | Field Boundary                      |
|   | K - Soil Test ppm                   |
|   | < 55 Very Low (19.7 ac ) (33.5 %)   |
|  | 55 - 93 Low (39.1 ac ) (66.5 %)     |
|  | 93 - 128 Medium (0.0 ac ) (0.0 %)   |
|  | 128 - 155 Optimum (0.0 ac ) (0.0 %) |
|  | > 155 Very High (0.0 ac ) (0.0 %)   |

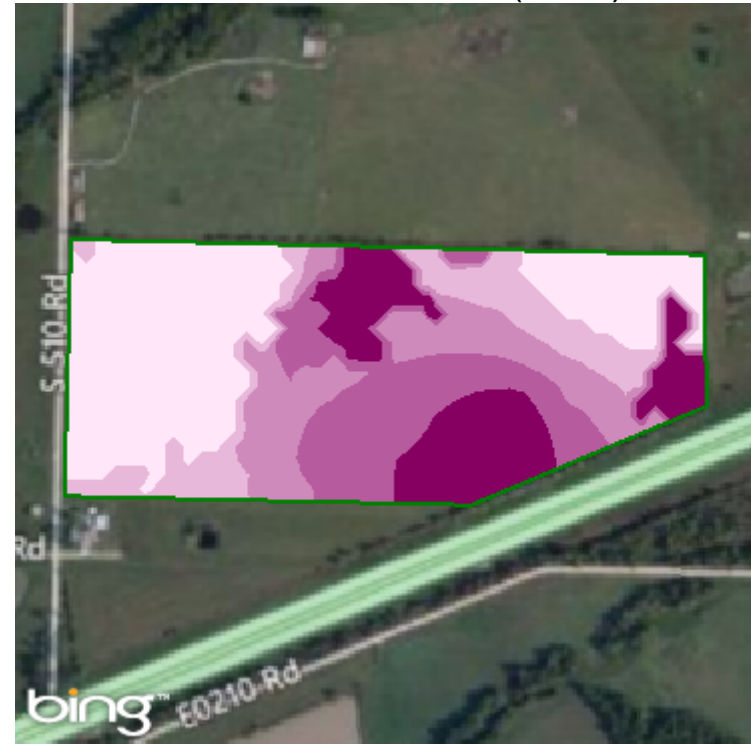
|   |                                   |
|---|-----------------------------------|
|    | Field Boundary                    |
|   | K Recommendation lb/ac            |
|   | 107.6 - 112.8 (1.2 ac ) (2.0 %)   |
|  | 113.3 - 117.7 (4.1 ac ) (6.9 %)   |
|  | 117.9 - 121.1 (12.9 ac ) (22.0 %) |
|  | 121.1 - 124.2 (27.8 ac ) (47.3 %) |
|  | 124.2 - 127.7 (12.8 ac ) (21.8 %) |



## P - Soil Test (2012)



## P Recommendation (2012)



Grower: Greg Leonard  
 Farm: Leonard Farms  
 Field: Desma Johnson House  
 Area: 58.78 ac

Season: 2012  
 Min: 14.00 ppm  
 Avg: 27.04 ppm  
 Max: 49.93 ppm

Season: 2012  
 Min Rate: 30.00 lb/ac  
 Avg Rate: 48.21 lb/ac  
 Max Rate: 72.56 lb/ac  
 Total Nutrient: 2,833.71 lb  
 Applied Area: 58.78 ac

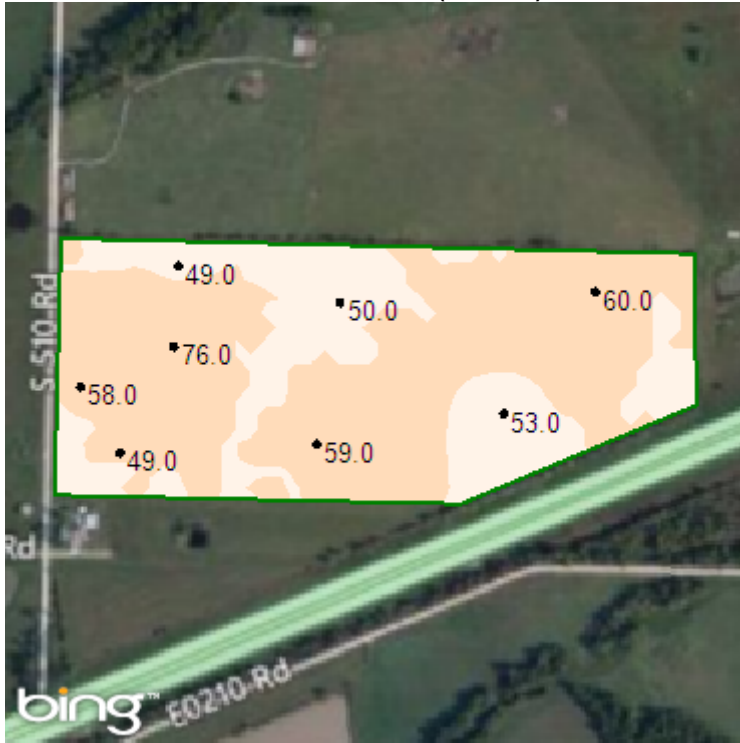
Order Id: 214202  
 Order Task Id: 4967738  
 Crop - Year 1: Soybeans  
 Purpose - Year 1: Dry Grain  
 Yield Goal - Year 1: 40  
 P Rec Option: No Build

| Field Boundary    |                                     |
|-------------------|-------------------------------------|
| P - Soil Test ppm |                                     |
|                   | < 3 Very Low (0.0 ac ) (0.0 %)      |
|                   | 3 - 14 Low (0.0 ac ) (0.0 %)        |
|                   | 14 - 30 Medium (37.0 ac ) (63.0 %)  |
|                   | 30 - 50 Optimum (21.8 ac ) (37.0 %) |
|                   | > 50 Very High (0.0 ac ) (0.0 %)    |

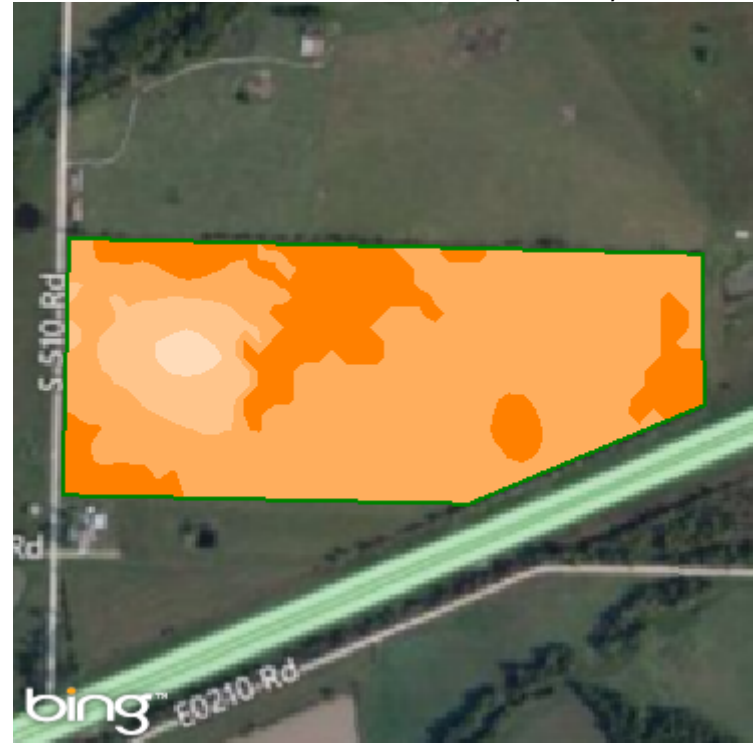
| Field Boundary         |                                 |
|------------------------|---------------------------------|
| P Recommendation lb/ac |                                 |
|                        | 30 (21.8 ac ) (37.0 %)          |
|                        | 40.8 - 49.3 (7.4 ac ) (12.6 %)  |
|                        | 49.8 - 58.2 (9.4 ac ) (16.0 %)  |
|                        | 58.3 - 65.9 (9.6 ac ) (16.3 %)  |
|                        | 66.1 - 72.6 (10.7 ac ) (18.1 %) |



K - Soil Test (2012)



K Recommendation (2012)















Grower: Greg Leonard  
 Farm: Leonard Farms  
 Field: Desma Johnson House  
 Area: 58.78 ac

Season: 2012  
 Min: 49.04 ppm  
 Avg: 56.52 ppm  
 Max: 75.75 ppm

Season: 2012  
 Min Rate: 83.26 lb/ac  
 Avg Rate: 93.53 lb/ac  
 Max Rate: 96.89 lb/ac  
 Total Nutrient: 5,497.88 lb  
 Applied Area: 58.78 ac

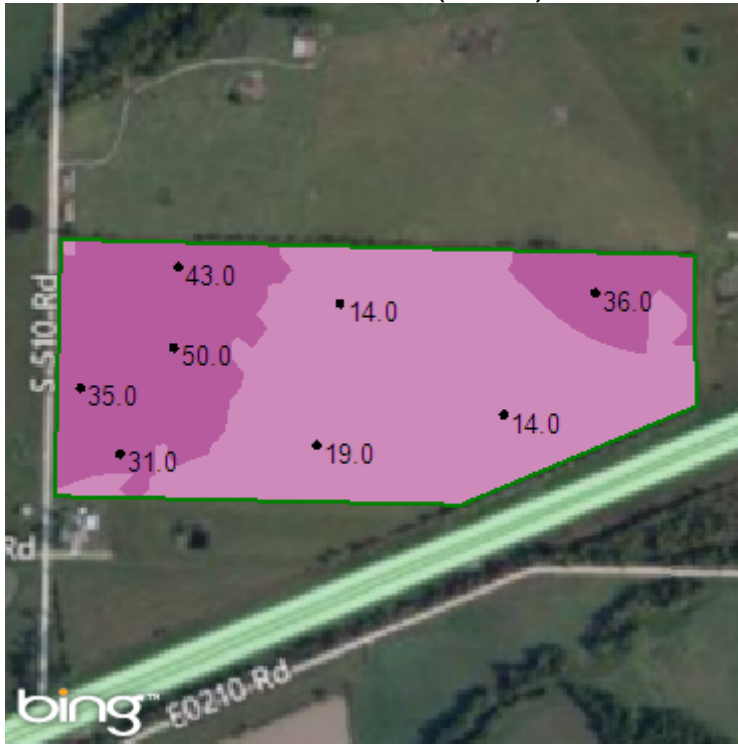
Order Id: 214202  
 Order Task Id: 4967739  
 Crop - Year 1: Soybeans  
 Purpose - Year 1: Dry Grain  
 Yield Goal - Year 1: 40  
 K Rec Option: No Build

|   |                                     |
|---|-------------------------------------|
|    | Field Boundary                      |
|   | K - Soil Test ppm                   |
|   | < 55 Very Low (19.7 ac ) (33.5 %)   |
|  | 55 - 93 Low (39.1 ac ) (66.5 %)     |
|  | 93 - 128 Medium (0.0 ac ) (0.0 %)   |
|  | 128 - 155 Optimum (0.0 ac ) (0.0 %) |
|  | > 155 Very High (0.0 ac ) (0.0 %)   |

|   |                                 |
|---|---------------------------------|
|    | Field Boundary                  |
|   | K Recommendation lb/ac          |
|   | 83.3 (0.1 ac ) (0.1 %)          |
|  | 84.2 - 86.9 (1.0 ac ) (1.7 %)   |
|  | 87.3 - 91.7 (5.7 ac ) (9.7 %)   |
|  | 91.8 - 94.8 (38.0 ac ) (64.6 %) |
|  | 94.8 - 96.9 (14.0 ac ) (23.9 %) |



P - Soil Test (2012)



P Recommendation (2012)















Grower: Greg Leonard  
 Farm: Leonard Farms  
 Field: Desma Johnson House  
 Area: 58.78 ac

Season: 2012  
 Min: 14.00 ppm  
 Avg: 27.04 ppm  
 Max: 49.93 ppm

Season: 2012  
 Min Rate: 22.82 lb/ac  
 Avg Rate: 53.86 lb/ac  
 Max Rate: 81.98 lb/ac  
 Total Nutrient: 3,165.98 lb  
 Applied Area: 58.78 ac

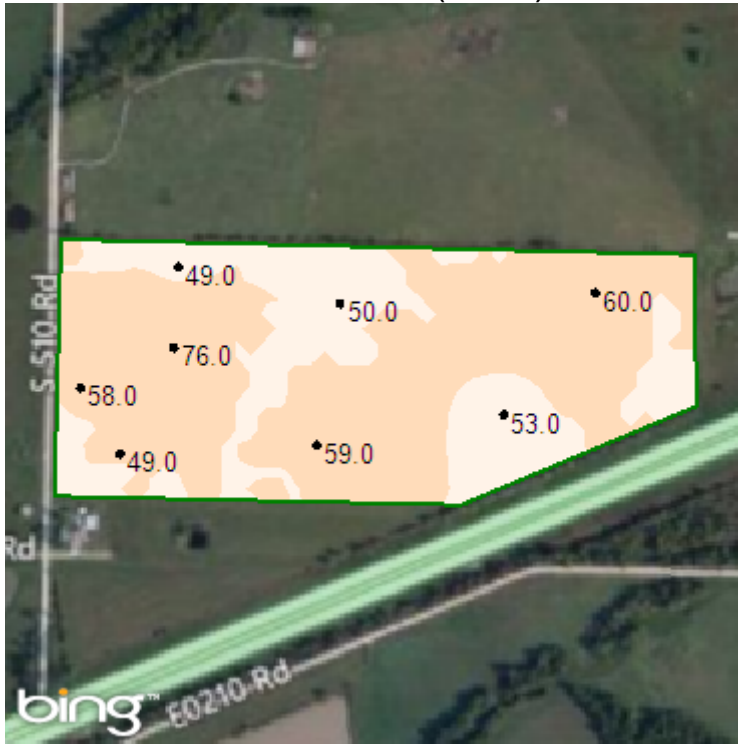
Order Id: 214201  
 Order Task Id: 4967735  
 Crop - Year 1: Wheat  
 Purpose - Year 1: Dry Grain  
 Yield Goal - Year 1: 50  
 P Rec Option: No Build

|   |                                     |
|---|-------------------------------------|
|    | Field Boundary                      |
|   | P - Soil Test ppm                   |
|   | < 3 Very Low (0.0 ac ) (0.0 %)      |
|  | 3 - 14 Low (0.0 ac ) (0.0 %)        |
|  | 14 - 30 Medium (37.0 ac ) (63.0 %)  |
|  | 30 - 50 Optimum (21.8 ac ) (37.0 %) |
|  | > 50 Very High (0.0 ac ) (0.0 %)    |

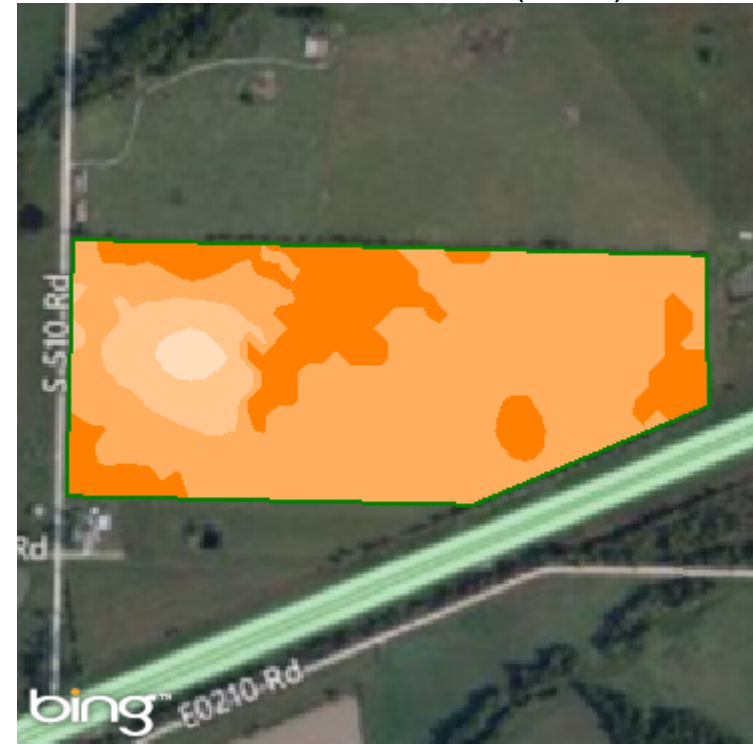
|   |                                 |
|---|---------------------------------|
|    | Field Boundary                  |
|   | P Recommendation lb/ac          |
|   | 22.8 - 28.8 (10.4 ac ) (17.7 %) |
|  | 29.3 - 41.4 (8.5 ac ) (14.5 %)  |
|  | 41.6 - 55.9 (10.2 ac ) (17.4 %) |
|  | 56.5 - 71.1 (14.1 ac ) (24.0 %) |
|  | 71.1 - 82 (15.5 ac ) (26.4 %)   |



## K - Soil Test (2012)



## K Recommendation (2012)

















Grower: Greg Leonard  
 Farm: Leonard Farms  
 Field: Desma Johnson House  
 Area: 58.78 ac

Season: 2012  
 Min: 49.04 ppm  
 Avg: 56.52 ppm  
 Max: 75.75 ppm

Season: 2012  
 Min Rate: 71.11 lb/ac  
 Avg Rate: 80.20 lb/ac  
 Max Rate: 82.96 lb/ac  
 Total Nutrient: 4,714.64 lb  
 Applied Area: 58.78 ac

Order Id: 214201  
 Order Task Id: 4967736  
 Crop - Year 1: Wheat  
 Purpose - Year 1: Dry Grain  
 Yield Goal - Year 1: 50  
 K Rec Option: No Build

|   |                                     |
|---|-------------------------------------|
|    | Field Boundary                      |
|   | K - Soil Test ppm                   |
|  | < 55 Very Low (19.7 ac ) (33.5 %)   |
|  | 55 - 93 Low (39.1 ac ) (66.5 %)     |
|  | 93 - 128 Medium (0.0 ac ) (0.0 %)   |
|  | 128 - 155 Optimum (0.0 ac ) (0.0 %) |
|  | > 155 Very High (0.0 ac ) (0.0 %)   |

|   |                                 |
|---|---------------------------------|
|    | Field Boundary                  |
|   | K Recommendation lb/ac          |
|  | 71.1 (0.1 ac ) (0.1 %)          |
|  | 72.1 - 75 (1.1 ac ) (1.8 %)     |
|  | 75.4 - 78.8 (5.6 ac ) (9.5 %)   |
|  | 78.8 - 81.2 (38.1 ac ) (64.8 %) |
|  | 81.2 - 83 (13.9 ac ) (23.7 %)   |



Mg - Soil Test (2012)



Mg Recommendation (2012)



Grower: Greg Leonard  
 Farm: Leonard Farms  
 Field: Desma Johnson House  
 Area: 58.78 ac

Season: 2012  
 Min: 76.08 ppm  
 Avg: 98.37 ppm  
 Max: 172.35 ppm

Season: 2012  
 Min Rate: 0.00 lb/ac  
 Avg Rate: 0.00 lb/ac  
 Max Rate: 0.00 lb/ac  
 Total Nutrient: 0.00 lb  
 Applied Area: 0.00 ac

Order Id: 214203  
 Order Task Id: 4967745  
 Crop - Year 1: Corn  
 Purpose - Year 1: Dry Grain

— Field Boundary  
 Mg - Soil Test ppm

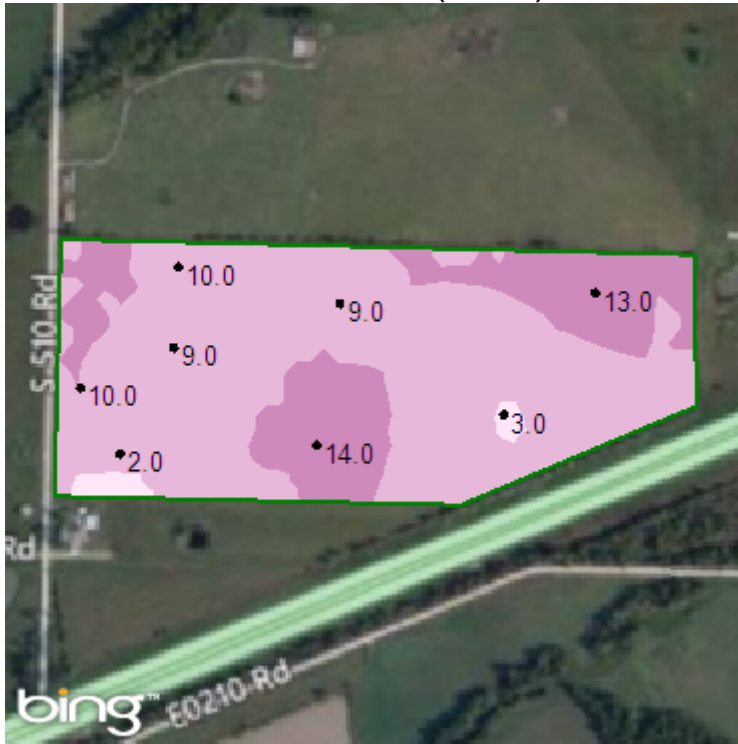
- < 30 Very Low (0.0 ac ) (0.0 %)
- 30 - 60 Low (0.0 ac ) (0.0 %)
- 60 - 145 Medium (57.0 ac ) (97.0 %)
- 145 - 175 Optimum (1.8 ac ) (3.0 %)
- > 175 Very High (0.0 ac ) (0.0 %)

— Field Boundary  
 Mg Recommendation lb/ac

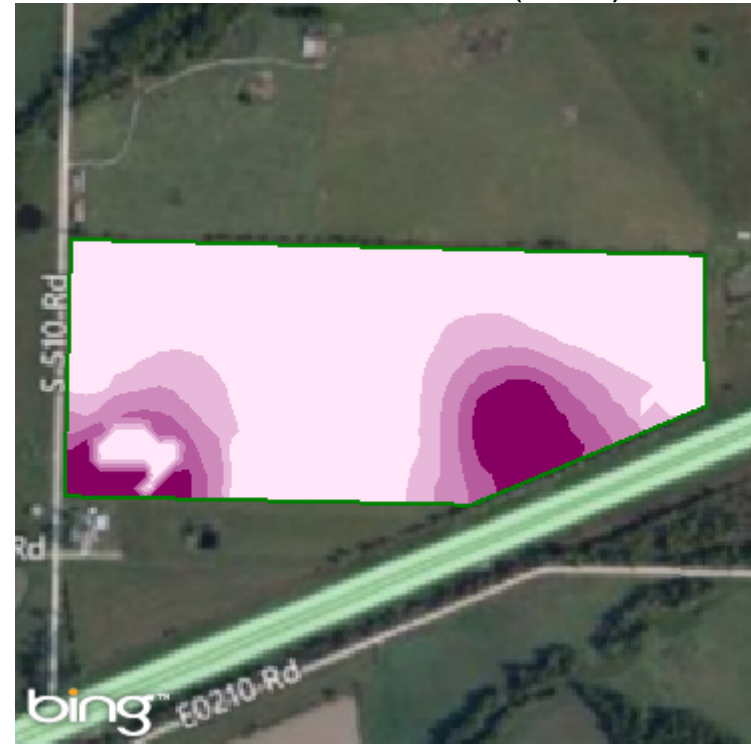
- 0 (58.8 ac ) (100.0 %)



## S - Soil Test (2012)



## S Recommendation (2012)



Grower: Greg Leonard  
 Farm: Leonard Farms  
 Field: Desma Johnson House  
 Area: 58.78 ac

Season: 2012  
 Min: 2.70 ppm  
 Avg: 9.03 ppm  
 Max: 13.48 ppm

Season: 2012  
 Min Rate: 9.78 lb/ac  
 Avg Rate: 11.39 lb/ac  
 Max Rate: 15.00 lb/ac  
 Total Nutrient: 669.69 lb  
 Applied Area: 58.78 ac

Order Id: 214203  
 Order Task Id: 4967743  
 Crop - Year 1: Corn  
 Purpose - Year 1: Dry Grain

|  |                                    |
|--|------------------------------------|
|  | Field Boundary                     |
|  | S - Soil Test ppm                  |
|  | < 4 Very Low (1.4 ac ) (2.3 %)     |
|  | 4 - 10 Low (42.2 ac ) (71.8 %)     |
|  | 10 - 20 Medium (15.2 ac ) (25.9 %) |
|  | 20 - 40 Optimum (0.0 ac ) (0.0 %)  |
|  | > 40 Very High (0.0 ac ) (0.0 %)   |

|  |                                |
|--|--------------------------------|
|  | Field Boundary                 |
|  | S Recommendation lb/ac         |
|  | 9.8 - 11.1 (40.2 ac ) (68.4 %) |
|  | 11.1 - 12.1 (6.2 ac ) (10.6 %) |
|  | 12.1 - 13.3 (4.4 ac ) (7.5 %)  |
|  | 13.4 - 14.4 (2.8 ac ) (4.8 %)  |
|  | 14.5 - 15 (5.1 ac ) (8.6 %)    |

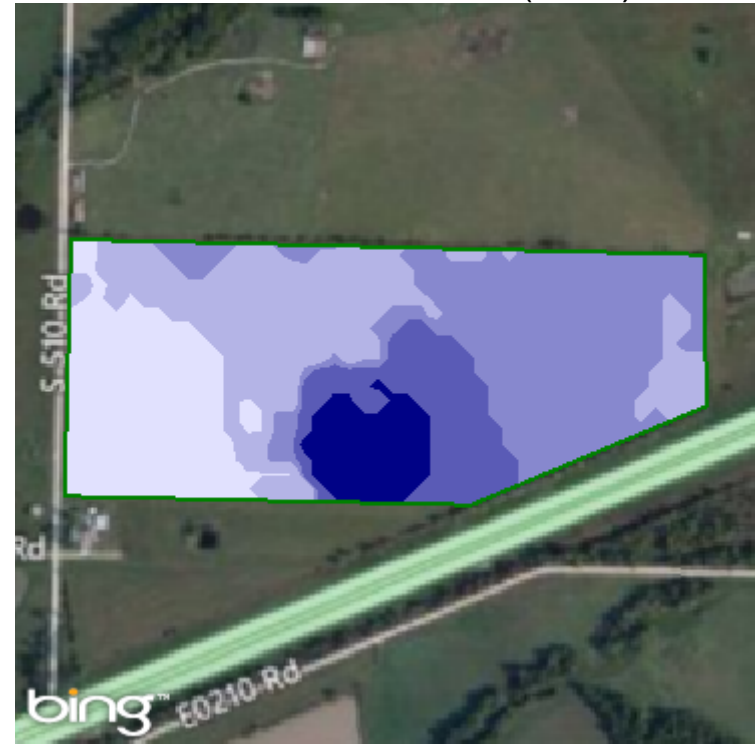




Zn - Soil Test (2012)



Zn Recommendation (2012)



Grower: Greg Leonard  
 Farm: Leonard Farms  
 Field: Desma Johnson House  
 Area: 58.78 ac

Season: 2012  
 Min: 1.12 ppm  
 Avg: 1.55 ppm  
 Max: 2.35 ppm

Season: 2012  
 Min Rate: 2.20 lb/ac  
 Avg Rate: 2.95 lb/ac  
 Max Rate: 3.40 lb/ac  
 Total Nutrient: 173.61 lb  
 Applied Area: 58.78 ac

Order Id: 214203  
 Order Task Id: 4967746  
 Crop - Year 1: Corn  
 Purpose - Year 1: Dry Grain

|                    |                                      |
|--------------------|--------------------------------------|
|                    | Field Boundary                       |
| Zn - Soil Test ppm |                                      |
|                    | < 0.5 Very Low (0.0 ac ) (0.0 %)     |
|                    | 0.5 - 1.5 Low (32.3 ac ) (55.0 %)    |
|                    | 1.5 - 3.0 Medium (26.5 ac ) (45.0 %) |
|                    | 3.0 - 9.0 Optimum (0.0 ac ) (0.0 %)  |
|                    | > 9.0 Very High (0.0 ac ) (0.0 %)    |

|                         |                               |
|-------------------------|-------------------------------|
|                         | Field Boundary                |
| Zn Recommendation lb/ac |                               |
|                         | 2.2 - 2.7 (13.2 ac ) (22.4 %) |
|                         | 2.8 - 3 (15.3 ac ) (26.0 %)   |
|                         | 3.1 (18.9 ac ) (32.1 %)       |
|                         | 3.2 (7.0 ac ) (11.9 %)        |
|                         | 3.3 - 3.4 (4.5 ac ) (7.6 %)   |

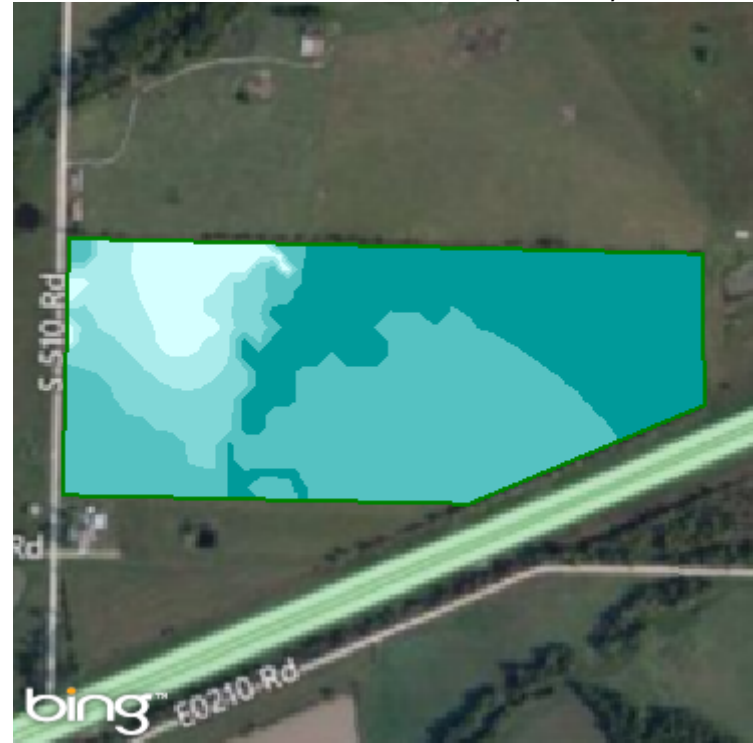




B - Soil Test (2012)



B Recommendation (2012)















Grower: Greg Leonard  
 Farm: Leonard Farms  
 Field: Desma Johnson House  
 Area: 58.78 ac

Season: 2012  
 Min: 0.30 ppm  
 Avg: 0.38 ppm  
 Max: 0.50 ppm

Season: 2012  
 Min Rate: 1.00 lb/ac  
 Avg Rate: 1.27 lb/ac  
 Max Rate: 1.44 lb/ac  
 Total Nutrient: 74.90 lb  
 Applied Area: 58.78 ac

Order Id: 214203  
 Order Task Id: 4967748  
 Crop - Year 1: Corn  
 Purpose - Year 1: Dry Grain

|   |                                     |
|---|-------------------------------------|
|    | Field Boundary                      |
|   | B - Soil Test ppm                   |
|   | < 0.1 Very Low (0.0 ac) (0.0 %)     |
|  | 0.1 - 0.3 Low (0.0 ac) (0.0 %)      |
|  | 0.3 - 0.5 Medium (55.7 ac) (94.8 %) |
|  | 0.5 - 1.5 Optimum (3.1 ac) (5.2 %)  |
|  | > 1.5 Very High (0.0 ac) (0.0 %)    |

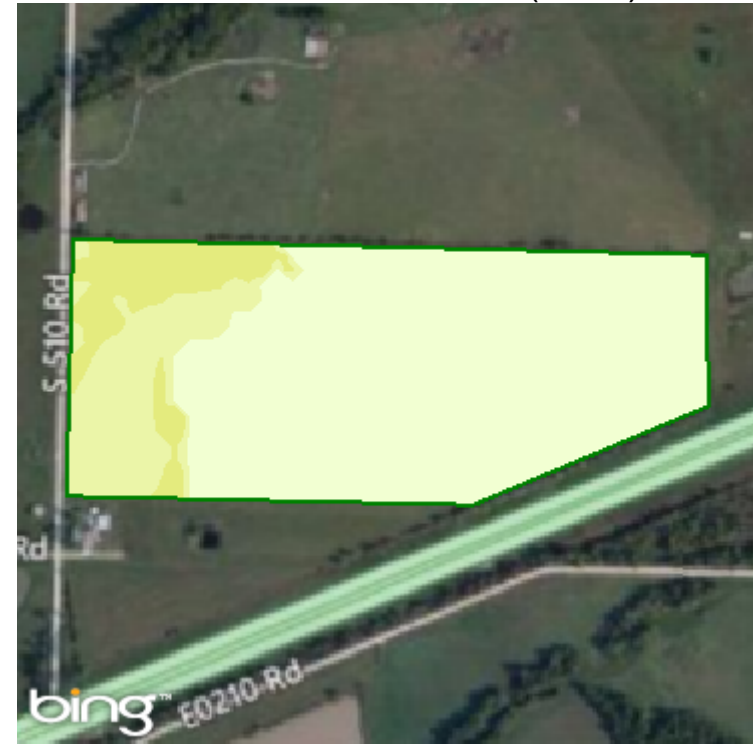
|   |                              |
|---|------------------------------|
|    | Field Boundary               |
|   | B Recommendation lb/ac       |
|   | 1 - 1 (4.6 ac) (7.8 %)       |
|  | 1 - 1.1 (3.7 ac) (6.2 %)     |
|  | 1.1 - 1.2 (5.2 ac) (8.8 %)   |
|  | 1.2 - 1.3 (24.2 ac) (41.2 %) |
|  | 1.3 - 1.4 (21.2 ac) (36.0 %) |



Mn - Soil Test (2012)



Mn Recommendation (2012)















Grower: Greg Leonard  
 Farm: Leonard Farms  
 Field: Desma Johnson House  
 Area: 58.78 ac

Season: 2012  
 Min: 20.04 ppm  
 Avg: 58.90 ppm  
 Max: 89.95 ppm

Season: 2012  
 Min Rate: 0.00 lb/ac  
 Avg Rate: 2.62 lb/ac  
 Max Rate: 5.72 lb/ac  
 Total Nutrient: 35.82 lb  
 Applied Area: 13.65 ac

Order Id: 214203  
 Order Task Id: 4967744  
 Crop - Year 1: Corn  
 Purpose - Year 1: Dry Grain

|   |                                    |
|---|------------------------------------|
|    | Field Boundary                     |
|   | Mn - Soil Test ppm                 |
|   | < 11 Very Low (0.0 ac) (0.0 %)     |
|  | 11 - 25 Low (2.3 ac) (3.9 %)       |
|  | 25 - 150 Medium (56.5 ac) (96.1 %) |
|  | 150 - 250 Optimum (0.0 ac) (0.0 %) |
|  | > 250 Very High (0.0 ac) (0.0 %)   |

|   |                             |
|---|-----------------------------|
|    | Field Boundary              |
|   | Mn Recommendation lb/ac     |
|   | 0 (45.1 ac) (76.8 %)        |
|  | 1.6 - 2.6 (7.3 ac) (12.4 %) |
|  | 2.6 - 4 (5.8 ac) (9.9 %)    |
|  | 4.4 - 5.2 (0.4 ac) (0.7 %)  |
|  | 5.4 - 5.7 (0.2 ac) (0.3 %)  |



Cu - Soil Test (2012)



Cu Recommendation (2012)












Grower: Greg Leonard  
 Farm: Leonard Farms  
 Field: Desma Johnson House  
 Area: 58.78 ac

Season: 2012  
 Min: 0.81 ppm  
 Avg: 1.05 ppm  
 Max: 1.35 ppm

Season: 2012  
 Min Rate: 0.00 lb/ac  
 Avg Rate: 1.00 lb/ac  
 Max Rate: 1.00 lb/ac  
 Total Nutrient: 10.75 lb  
 Applied Area: 10.75 ac

Order Id: 214203  
 Order Task Id: 4967747  
 Crop - Year 1: Corn  
 Purpose - Year 1: Dry Grain

|   |                                       |
|---|---------------------------------------|
|    | Field Boundary                        |
|   | Cu - Soil Test ppm                    |
|   | < 0.3 Very Low (0.0 ac ) (0.0 %)      |
|  | 0.3 - 0.8 Low (0.0 ac ) (0.0 %)       |
|  | 0.8 - 2.9 Medium (58.8 ac ) (100.0 %) |
|  | 2.9 - 6.0 Optimum (0.0 ac ) (0.0 %)   |
|  | > 6.0 Very High (0.0 ac ) (0.0 %)     |

|   |                         |
|---|-------------------------|
|    | Field Boundary          |
|   | Cu Recommendation lb/ac |
|   | 0 (48.0 ac ) (81.7 %)   |
|  | 1 (10.7 ac ) (18.3 %)   |



Na - Soil Test (2012)









Na% - Soil Test (2012)









Grower: Greg Leonard  
 Farm: Leonard Farms  
 Field: Desma Johnson House  
 Area: 58.78 ac

Season: 2012  
 Min: 14.94 ppm  
 Avg: 34.37 ppm  
 Max: 124.94 ppm

Season: 2012  
 Min: 1.02 Percent  
 Avg: 1.98 Percent  
 Max: 6.20 Percent

|   |                                |
|---|--------------------------------|
|    | Field Boundary                 |
| Na - Soil Test ppm  |                                |
|   | 14.9 - 30.7 (43.8 ac) (74.5 %) |
|  | 31.1 - 52.4 (3.4 ac) (5.9 %)   |
|  | 53.6 - 76.7 (4.1 ac) (6.9 %)   |
|  | 77.3 - 103.1 (4.5 ac) (7.7 %)  |
|  | 104.3 - 124.9 (3.0 ac) (5.1 %) |

|   |                            |
|---|----------------------------|
|    | Field Boundary             |
| Na% - Soil Test Percent   |                            |
|   | 1 - 1.9 (43.9 ac) (74.7 %) |
|  | 2 - 3.1 (5.0 ac) (8.4 %)   |
|  | 3.1 - 4.2 (4.1 ac) (7.1 %) |
|  | 4.3 - 5.3 (3.3 ac) (5.7 %) |
|  | 5.3 - 6.2 (2.4 ac) (4.1 %) |



# Soil Test Results

Grower: Greg Leonard  
 Farm: Leonard Farms  
 Field: Desma Johnson House  
 Area: 58.78 ac  
 Event Date(s): 05/08/2012

|      |    |    |     |     |      |     |     |      |     |     |     |
|------|----|----|-----|-----|------|-----|-----|------|-----|-----|-----|
| Min: | 14 | 49 | 5.6 | 1.1 | 2.0  | 0.3 | 77  | 20.0 | 0.8 | 5.1 | 2.1 |
| Max: | 50 | 76 | 6.2 | 2.4 | 14.0 | 0.5 | 173 | 90.0 | 1.4 | 9.6 | 3.2 |
| Avg: | 30 | 57 | 5.9 | 1.6 | 8.8  | 0.4 | 102 | 52.9 | 1.1 | 7.1 | 2.6 |

| Sample ID | P Mehlich III | K  | pH  | Zn  | S    | B   | Mg  | Mn   | Cu  | CEC | OM  |
|-----------|---------------|----|-----|-----|------|-----|-----|------|-----|-----|-----|
| 1         | 36            | 60 | 5.7 | 1.4 | 13.0 | 0.3 | 77  | 90.0 | 1.0 | 5.1 | 2.3 |
| 2         | 14            | 53 | 5.8 | 1.4 | 3.0  | 0.4 | 102 | 64.0 | 0.9 | 7.7 | 3.2 |
| 3         | 19            | 59 | 5.6 | 1.1 | 14.0 | 0.4 | 82  | 62.0 | 0.8 | 5.7 | 2.1 |
| 4         | 14            | 50 | 6.0 | 1.5 | 9.0  | 0.3 | 105 | 71.0 | 1.2 | 7.3 | 3.0 |
| 5         | 31            | 49 | 5.7 | 2.4 | 2.0  | 0.4 | 88  | 38.0 | 1.4 | 6.1 | 2.4 |
| 6         | 35            | 58 | 5.9 | 2.1 | 10.0 | 0.4 | 83  | 31.0 | 1.1 | 6.5 | 2.2 |
| 7         | 50            | 76 | 6.1 | 1.9 | 9.0  | 0.5 | 173 | 47.0 | 1.3 | 9.6 | 2.6 |
| 8         | 43            | 49 | 6.2 | 1.4 | 10.0 | 0.5 | 103 | 20.0 | 1.1 | 8.7 | 3.0 |

