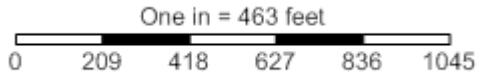


Shallow EC Points



Grower: Greg Leonard
Farm: Leonard
Field: New Field
Area: 57.25 ac
Lat: 36.71633°N
Lon: 094.95886°W

Min: 5.80
Avg: 15.29
Max: 39.60

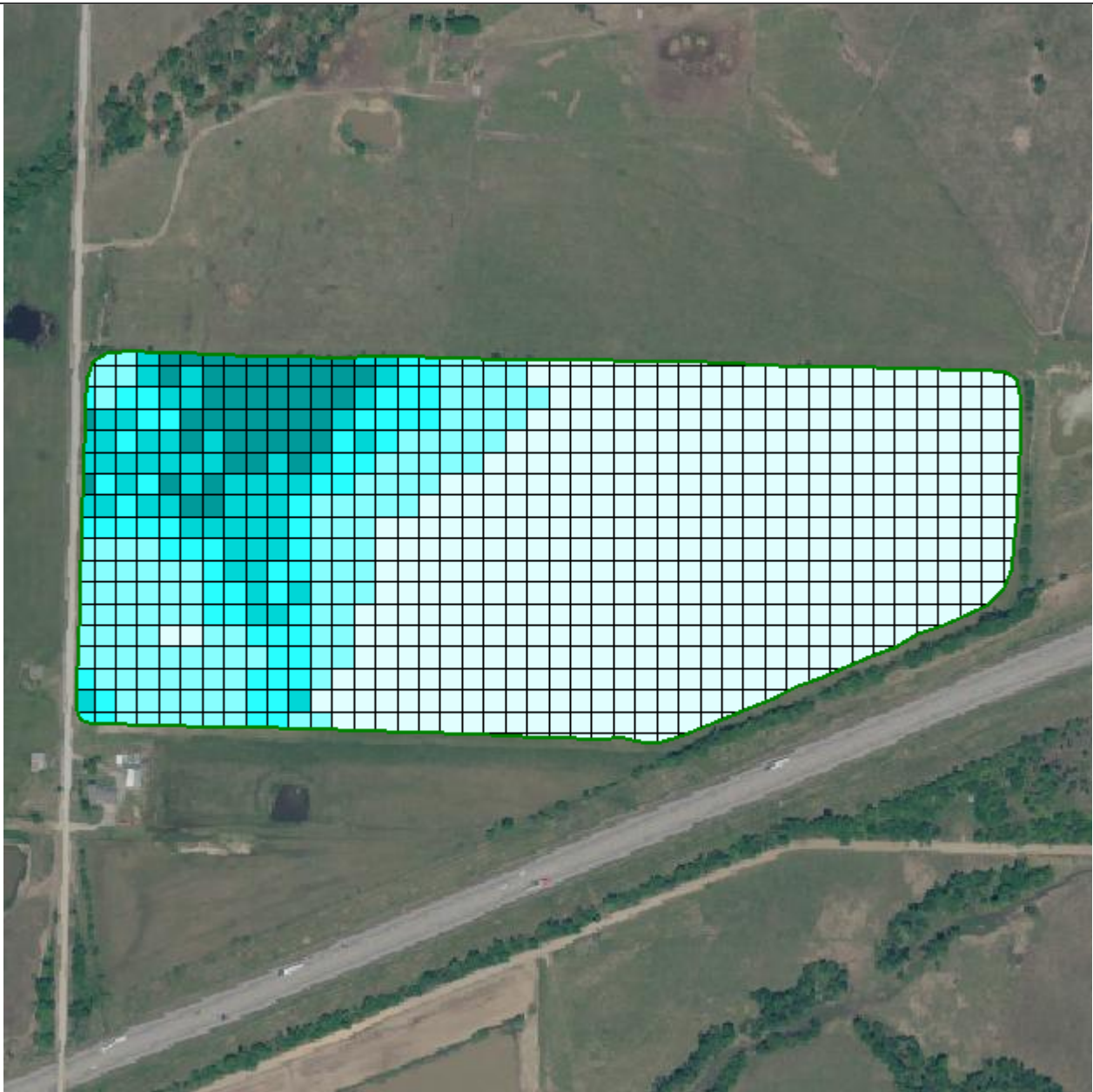


Your Logo 1
Goes Here

	Field Boundary
Shallow EC Points	
	5.8 - 10.6
	10.7 - 15.3
	15.5 - 22.7
	22.8 - 30.9
	31.1 - 39.6

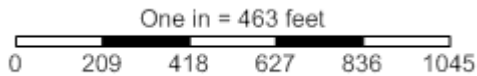
Your Logo 2
Goes Here

Shallow EC - Grid









Grower: Greg Leonard
 Farm: Leonard
 Field: New Field
 Area: 57.25 ac
 Lat: 36.71633°N
 Lon: 094.95886°W

Season: 2012
 Min: 6.28 mS/meter
 Avg: 15.72 mS/meter
 Max: 36.64 mS/meter

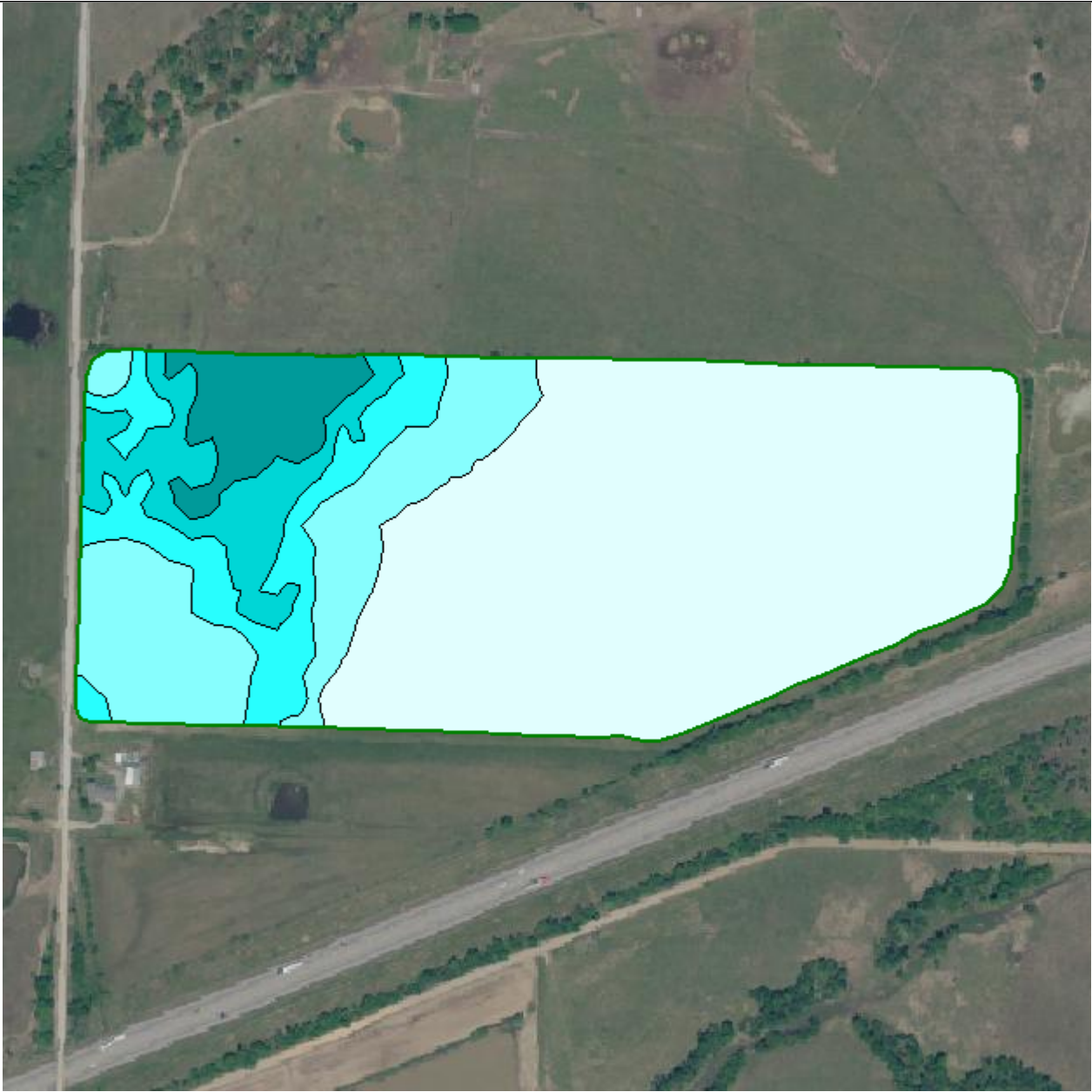


Your Logo 1
Goes Here

	Field Boundary
Shallow EC - Grid mS/meter	
	6.3 - 14.7 (35.6 ac) (62.2 %)
	14.9 - 21.7 (9.1 ac) (15.9 %)
	21.9 - 26.4 (4.8 ac) (8.4 %)
	26.5 - 30.4 (4.4 ac) (7.6 %)
	30.5 - 36.6 (3.4 ac) (5.9 %)

Your Logo 2
Goes Here

Shallow EC - Smooth









Grower: Greg Leonard
Farm: Leonard
Field: New Field
Area: 57.25 ac
Lat: 36.71633°N
Lon: 094.95886°W

Season: 2012
Min: 6.28 mS/meter
Avg: 15.72 mS/meter
Max: 36.64 mS/meter



One in = 463 feet
0 209 418 627 836 1045

Your Logo 1
Goes Here

	Field Boundary
Shallow EC - Smooth mS/meter	
	6.3 - 14.7 (35.6 ac) (62.2 %)
	14.9 - 21.7 (9.1 ac) (15.9 %)
	21.9 - 26.4 (4.8 ac) (8.4 %)
	26.5 - 30.4 (4.4 ac) (7.6 %)
	30.5 - 36.6 (3.4 ac) (5.9 %)

Your Logo 2
Goes Here

Shallow EC - Ultra Smooth



Grower: Greg Leonard
Farm: Leonard
Field: New Field
Area: 57.25 ac
Lat: 36.71633°N
Lon: 094.95886°W

Season: 2012
Min: 6.28 mS/meter
Avg: 15.72 mS/meter
Max: 36.64 mS/meter



One in = 463 feet
0 209 418 627 836 1045

Your Logo 1
Goes Here

	Field Boundary
	Shallow EC - Ultra Smooth mS/meter
	6.3 - 14.7 (35.6 ac) (62.2 %)
	14.9 - 21.7 (9.1 ac) (15.9 %)
	21.9 - 26.4 (4.8 ac) (8.4 %)
	26.5 - 30.4 (4.4 ac) (7.6 %)
	30.5 - 36.6 (3.4 ac) (5.9 %)

Your Logo 2
Goes Here

Deep EC Points










Grower: Greg Leonard
Farm: Leonard
Field: New Field
Area: 57.25 ac
Lat: 36.71633°N
Lon: 094.95886°W

Min: 13.70
Avg: 49.21
Max: 135.00



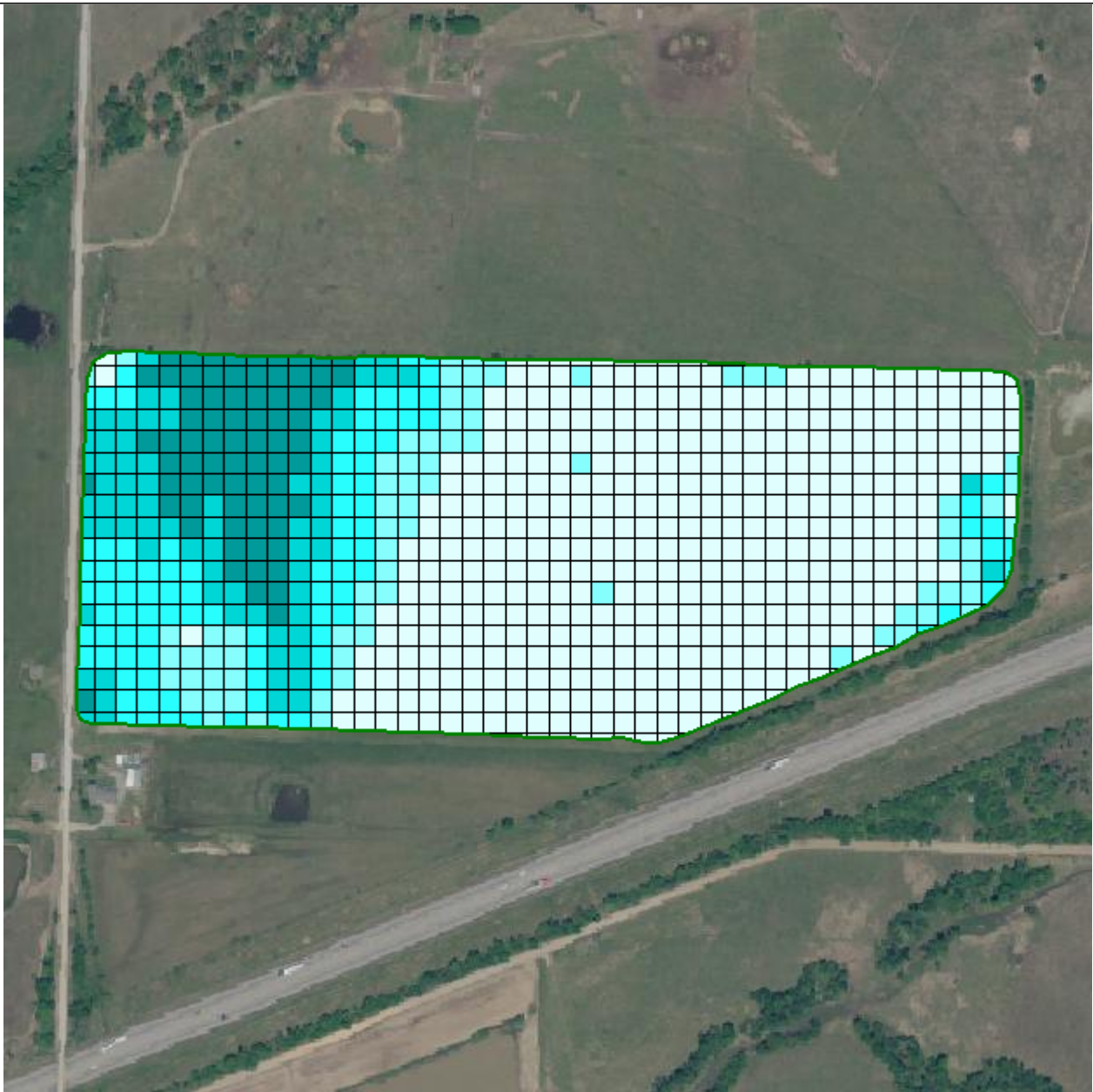
One in = 463 feet
0 209 418 627 836 1045

Your Logo 1
Goes Here

	Field Boundary
	Deep EC Points
	13.7 - 27
	27.1 - 48.2
	48.4 - 77.5
	77.6 - 103.8
	104 - 135

Your Logo 2
Goes Here

Deep EC - Grid










Grower: Greg Leonard
Farm: Leonard
Field: New Field
Area: 57.25 ac
Lat: 36.71633°N
Lon: 094.95886°W

Season: 2012
Min: 18.22 mS/meter
Avg: 49.62 mS/meter
Max: 123.46 mS/meter



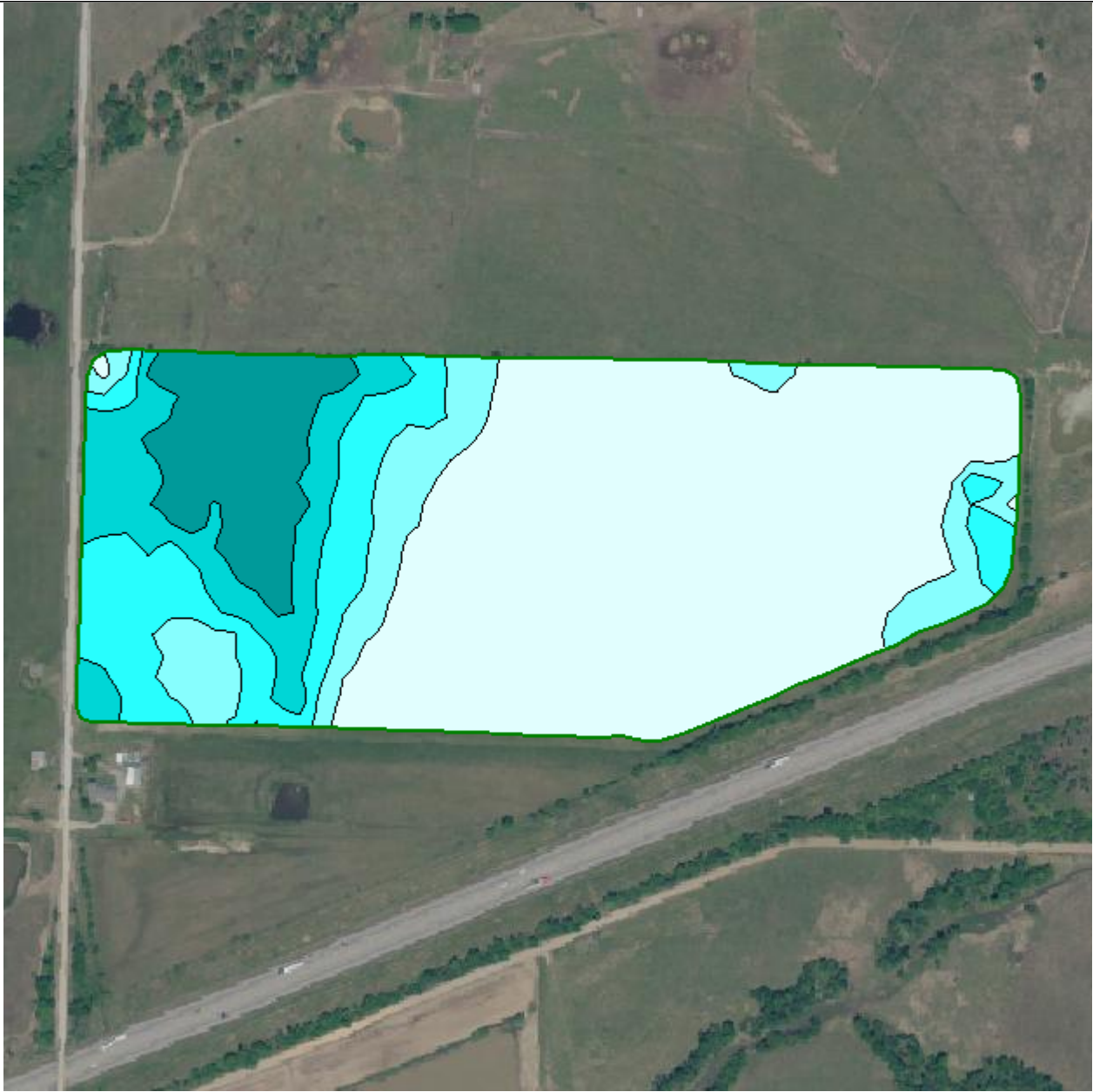
One in = 463 feet
0 209 418 627 836 1045

Your Logo 1
Goes Here

	Field Boundary
	Deep EC - Grid mS/meter
	18.2 - 39.8 (33.0 ac) (57.7 %)
	40.1 - 63.9 (5.9 ac) (10.3 %)
	64 - 83.4 (7.1 ac) (12.4 %)
	83.8 - 100.7 (5.6 ac) (9.7 %)
	100.8 - 123.5 (5.7 ac) (9.9 %)

Your Logo 2
Goes Here

Deep EC - Smooth



Grower: Greg Leonard
Farm: Leonard
Field: New Field
Area: 57.25 ac
Lat: 36.71633°N
Lon: 094.95886°W

Season: 2012
Min: 18.22 mS/meter
Avg: 49.62 mS/meter
Max: 123.46 mS/meter



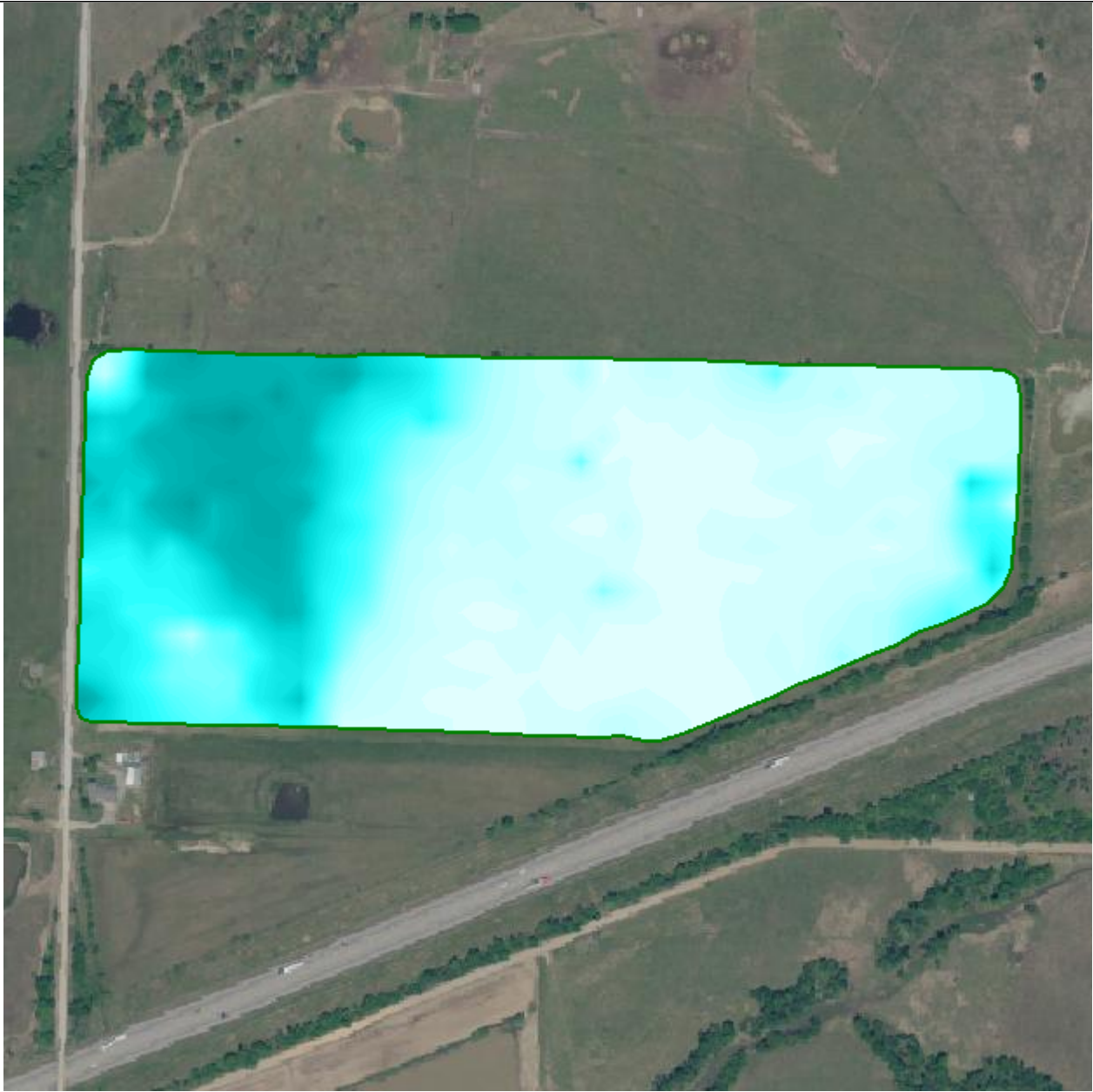
One in = 463 feet
0 209 418 627 836 1045

Your Logo 1
Goes Here

	Field Boundary
	Deep EC - Smooth mS/meter
	18.2 - 39.8 (33.0 ac) (57.7 %)
	40.1 - 63.9 (5.9 ac) (10.3 %)
	64 - 83.4 (7.1 ac) (12.4 %)
	83.8 - 100.7 (5.6 ac) (9.7 %)
	100.8 - 123.5 (5.7 ac) (9.9 %)

Your Logo 2
Goes Here

Deep EC - Ultra Smooth



Grower: Greg Leonard
Farm: Leonard
Field: New Field
Area: 57.25 ac
Lat: 36.71633°N
Lon: 094.95886°W

Season: 2012
Min: 18.22 mS/meter
Avg: 49.62 mS/meter
Max: 123.46 mS/meter



One in = 463 feet
0 209 418 627 836 1045

Your Logo 1
Goes Here

	Field Boundary
	18.2 - 39.8 (33.0 ac) (57.7 %)
	40.1 - 63.9 (5.9 ac) (10.3 %)
	64 - 83.4 (7.1 ac) (12.4 %)
	83.8 - 100.7 (5.6 ac) (9.7 %)
	100.8 - 123.5 (5.7 ac) (9.9 %)

Your Logo 2
Goes Here